

First Facts

CUNYfirst Technical Requirements

Supported OS & Browsers People Soft 9 - CUNYfirst

The following are the combinations of web browser and client operating systems PeopleSoft is certifying for all PeopleSoft 9

- Internet Explorer 6 on Windows 2000, Windows XP, and Windows Server 2003
- Internet Explorer 7 on Windows XP, Windows Server 2003, Windows Vista
- Netscape 7.x on Windows 2000, Windows XP, and Windows Server 2003, UNIX, Linux, and Mac OS 9, X.10
- Netscape 8.1 on Windows 2000, Windows XP and Windows Server 2003.
- Mozilla 1.7 on Windows XP, UNIX, Linux, and Mac OS X
- Firefox 1.5 on Windows 2000, Windows XP, Windows Server 2003, UNIX, Linux, and Mac OS X.
- Firefox 2.x on Windows 2000, Windows XP, Windows Server 2003, UNIX, Windows Vista Linux, and Mac OS X.
- Apple Safari 2.0.4 on Mac OS X.10
- Apple Safari 3.0.4 on Mac OS X.10
- Pocket Internet Explorer on Pocket PC 2003 (First Edition and Second Edition)

Supported OS & Browsers UPK 2.75

The following are the combinations of web browser and client operating systems PeopleSoft is certifying for UPK 2.75

- Internet Explorer 6 on Windows 2000, Windows XP, and Windows Server 2003
- Internet Explorer 7 on Windows XP, Windows Server 2003, Windows Vista
- Netscape 7.x on Windows 2000, Windows XP, and Windows Server 2003, UNIX, Linux, and Mac OS 9, X
- Netscape 8.1 on Windows 2000, Windows XP and Windows Server 2003.
- Mozilla 1.7 on Windows, UNIX, Linux, and Mac OS X
- Firefox 2.0 on Windows 2000, Windows XP, Windows Server 2003, UNIX, Linux.
- Pocket Internet Explorer on Pocket PC 2003 (First Edition and Second Edition)

- **Apple Safari on Mac OS X.10 and latter and Windows XP and latter IS NOT SUPPORTED AT THIS TIME**

First Facts

Supported OS & Browsers UPK 3.1

The following are the combinations of web browser and client operating systems PeopleSoft is certifying for UPK 3.1

- Internet Explorer 6 on Windows 2000, Windows XP, and Windows Server 2003
- Internet Explorer 7 on Windows XP, Windows Server 2003, Windows Vista
- Netscape 7.x on Windows 2000, Windows XP, and Windows Server 2003, UNIX, Linux, and Mac OS 9, X
- Netscape 8.1 on Windows 2000, Windows XP and Windows Server 2003.
- Mozilla 1.7 on Windows, UNIX, Linux, and Mac OS X
- Firefox 2.0 on Windows 2000, Windows XP, Windows Server 2003, UNIX, Linux, and Mac OS X.
- Pocket Internet Explorer on Pocket PC 2003 (First Edition and Second Edition)

• **Apple Safari on Mac OS X.10 and latter and Windows XP and latter IS NOT SUPPORTED AT THIS TIME**

Workstation Requirements:

The following are the minimum end user workstation requirements:

- While additional memory is generally beneficial, 512 MB of System RAM is the minimum recommended.
- 1 GHz Pentium or equivalent processor
- VGA controller and display of 800x600 resolution or higher and High Color (16 bit) mode for the best display results.

First Facts

The following are the minimum end user mobile device requirements:

Pocket PC 2003 (First Edition and Second Edition) with a minimum of 64 MB of RAM

One of the following for network connectivity:

- USB cradle
- Serial cable
- Ethernet adapter (wired or wireless)
- Bluetooth™ wireless
- Modem

In addition, Microsoft ActiveSync v3.8 must be installed on the host PC connecting to the Pocket PC device. Pocket PC devices use ActiveSync to establish network connectivity through the host PC's network connection with ActiveSync's "pass through" feature. This allows the PeopleTools Mobile Agent running on a Pocket PC to exchange data with PeopleSoft applications running on the corporate server using HTTP protocol. Microsoft ActiveSync software usually comes packaged with the Pocket PC hardware. It can also be downloaded from Microsoft's web site.

Software Requirements

PeopleSoft recommends that customers use Excel XP and Adobe Acrobat reader 4.5 or higher to run and review reports from CUNY FIRST.

Browser Settings

Active X Controls

Active X Controls are not required for PeopleSoft. Note however that there is one known, minor exception in Enterprise Portal 9.0's Content Management feature. Content Management now includes a built-in GUI HTML editor. The HTML editor only appears when using IE w/Active X Controls enabled. When Active X is not available, standard HTML can still be entered. In this case, CM contributors can simply copy/paste HTML from their favorite HTML editor.

Java

PeopleSoft does NOT utilize Java technology within the browser. Java technology is only used on the server side (ie: web server and app server). Therefore, no JRE needs to be installed on the end-user's browser

JavaScript

JavaScript is heavily utilized within all PeopleSoft based products.

First Facts

Minimum Browser Permissions

Cookies

Cookies must be allowed for authentication to work. For IE, in PRIVACY tab, settings for Internet Zone (??), settings should be 'Medium High' (??) or lower, OR add all host names to Trusted Sites list and set security of this zone to 'Medium High' or lower.

?? = the exact IE settings for security zones / privacy settings cannot be confirmed until the infrastructure is completed and exposed to the Internet via Tivoli TAM. However, the primary requirement is that cookies must be allowed, as PeopleSoft-based applications, like most web applications, rely heavily on browser cookies.

Pop-ups

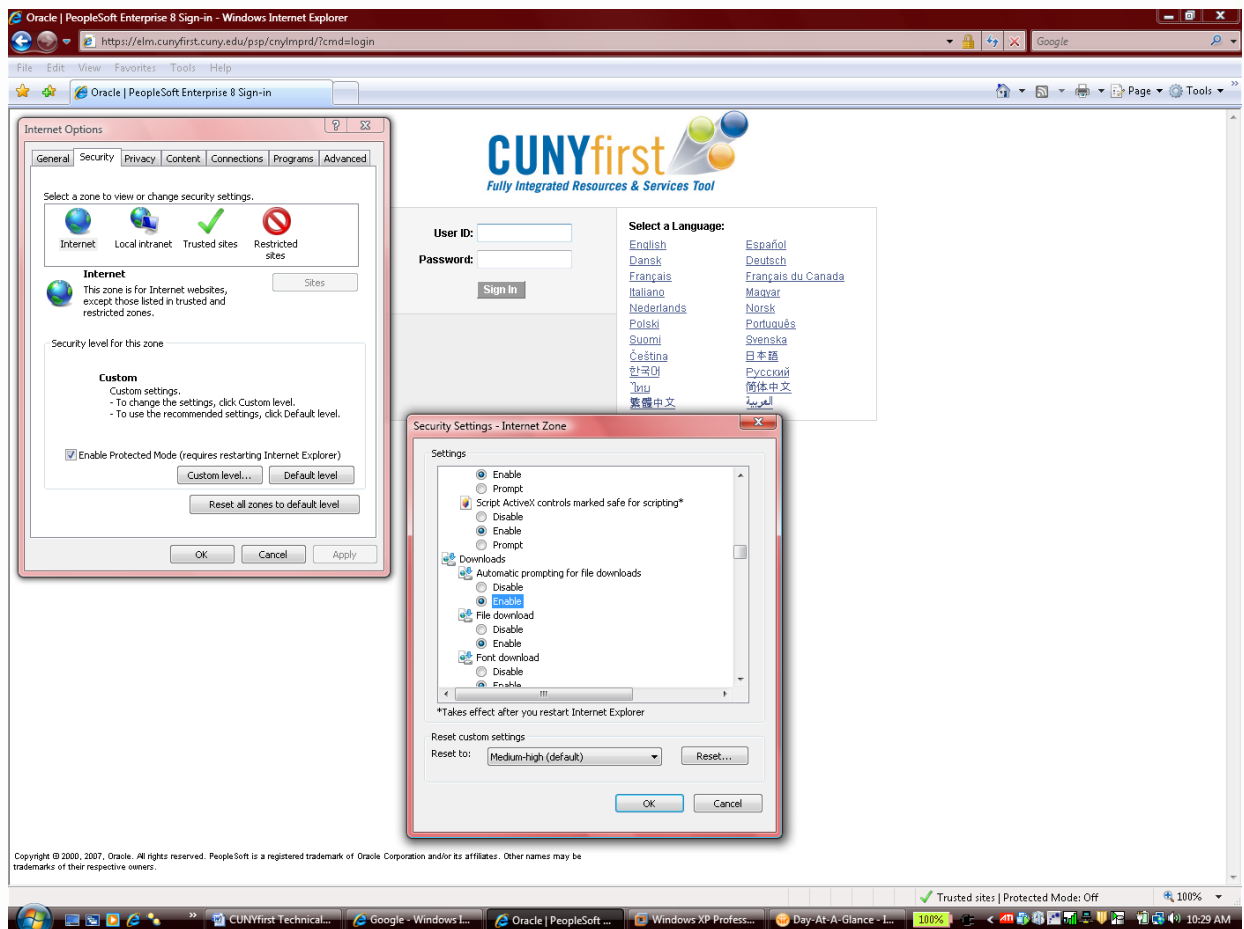
Pop-up's are used within all PeopleSoft applications. Therefore, pop-up blockers must be disabled for either ALL sites, or ALL PS web server sites (*.cunyfirst.cuny.edu) (not just PS Portal). IT Staff can configure browsers to allow pop- ups from all PS sites below either via group policy or a local configuration in the trusted site configuration of their supported browser. (*.cunyfirst.cuny.edu)

Other

For "Internet Explorer for Windows", be sure to enable the following options:

- 'Use HTTP 1.1' (recommended for increased performance)
- 'Show Pictures'
- 'Use SSL 2.0' & 'Use SSL 3.0' (specific SSL version depend on web server settings)
- Enable 'Automatic prompting for file downloads' in Internet Security Zone.(Custom)

First Facts



Network Ports / Protocols:

The following ports are required to be open in your firewalls from your local workstations to CUNYfirst hosting facility. 443/Secure Web, 22/SSH/SFTP, and 3389/Terminal Services (development only). All IP's to the hosting facility will be NATed to CUNY routable IP's. No network changes should be required on the Campus side to access the systems except firewall changes.

Printers:

Standard locally attached, network attached or wireless printing that conform to 180-character-wide HP Line Printing fonts is supporting in PeopleSoft. Reports are generated in standard Excel 2000 or PDF formats. Your printer must be configured with sufficient memory (typically 1.5 MB) to produce graphics images for page printouts. If end user workstations can support this configuration then user will have no issues printing from CUNY FIRST.

First Facts

Print Stock Requirements:

There are no special print stock requirements for any go live in 2008. We will update this document with any special requirements as they are identified.

Access to CUNYfirst

The following urls can be used to test connectivity from each campus to CUNYfirst. As stated above only port 443 (https) is needed to be open from each workstation to the hosting environment. Please try one of the below listed links If one link does not work please another. Some urls are not in production as of yet. If you can get to any one of the links then your network has routes into the hosting facility and your firewall is allowing access.

Production:

<https://crm.cunyfirst.cuny.edu/psp/cnycmprd/?cmd=login>

<https://elm.cunyfirst.cuny.edu/cnylmp/d/signon.html>

<https://fscm.cunyfirst.cuny.edu/psp/cnyfsprd/?cmd=login>

<https://hrsa.cunyfirst.cuny.edu/psp/cnyhcprd/?cmd=login>

<https://crm.cunyfirst.cuny.edu/psp/cnycmprd/?cmd=login>

<https://epm.cunyfirst.cuny.edu/cnyppm/d/signon.html>

<https://ep.cunyfirst.cuny.edu/cnyep/d/signon.html>

<https://pp.cunyfirst.cuny.edu/cnypp/d/signon.html>

DR:

<https://128.228.158.46/cnycmprd/signon.html>

<https://128.228.158.49/cnylmp/d/signon.html>

<https://128.228.158.51/cnyfsprd/signon.html>

<https://128.228.158.109/cnypp/d/signon.html>

<https://128.228.158.112/cnyfsprd/signon.html>

<https://128.228.158.113/cnyhcprd/signon.html>

*****Please note that these urls are not routing thru the reverse proxy server as of today. Reverse proxy is a requirement for GL and all future modules.*****

Sftp Servers

The following SFTP (Secure File Transfer Protocol) servers will be used and will have to be identified and functional from each campus. To accomplish this have a member of your IT staff telnet on port 22 to the following servers from a workstation behind your firewall. le: telnet sftp.cunyfirst.cuny.edu 22

First Facts

Production

sftp.cunyfirst.cuny.edu
 sftpnt.cunyfirst.cuny.edu
 sftpuk.cunyfirst.cuny.edu

DR:

128.228.157.95

```

    C:\>telnet sftp.cunyfirst.cuny.edu 22
    
```

You should receive the following for sftp.cunyfirst.cuny.edu

```

    SSH-2.0-OpenSSH_4.5p1+sftpfilecontrol-v1.2
    
```

You should receive the following for sftpnt.cunyfirst.cuny.edu

```

    SSH-2.0-1.36 sshlib: GlobalScape
    [!@#%&'*~]diffie-hellman-group1-sha1ssh-dssitwofish-cbc,twofish128-cbc,b
    lowfish-cbc,3des-cbc,arcfour,cast128-cbc,aes256-cbc,twofish256-cbc,aes128-cbcitw
    ofish-cbc,twofish128-cbc,blowfish-cbc,3des-cbc,arcfour,cast128-cbc,aes256-cbc,tw
    ofish256-cbc,aes128-cbc+hmac-sha1,hmac-md5,hmac-sha1-96,hmac-md5-96+hmac-sha1,hm
    ac-md5,hmac-sha1-96,hmac-md5-96 zlib,none zlib,none |^_`~!@#%&'*~
    
```