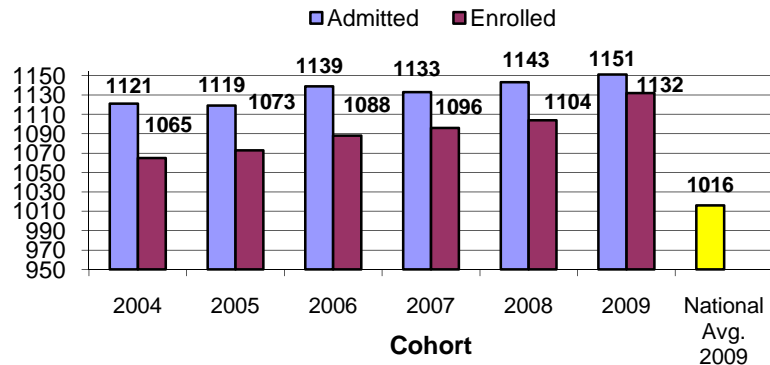
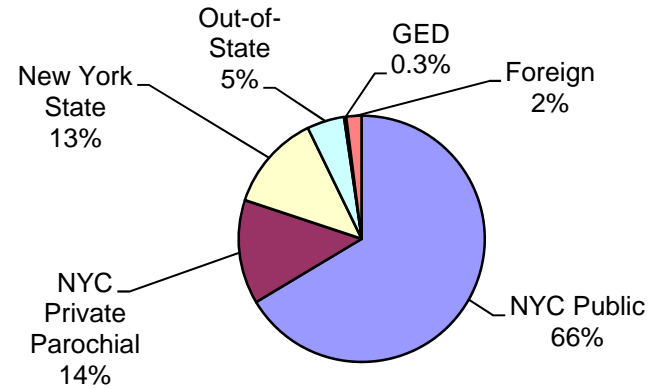


SAT Scores of Admitted & Enrolled Freshmen



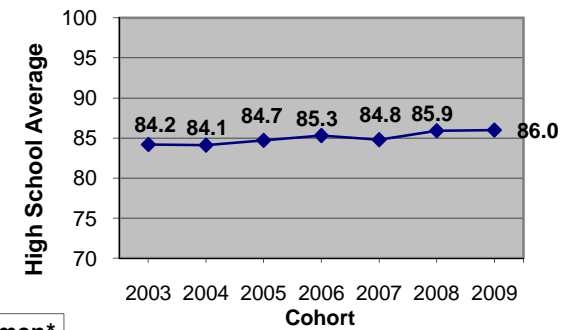
Type of High School Last Attended



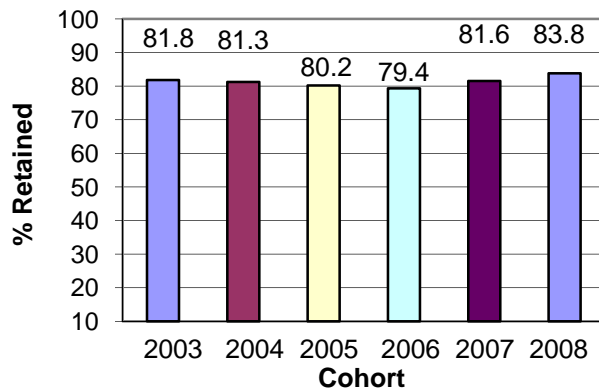
FRESHMEN FACTS

2009 Freshmen Represent 73 Countries and Speak 53 Different Languages.

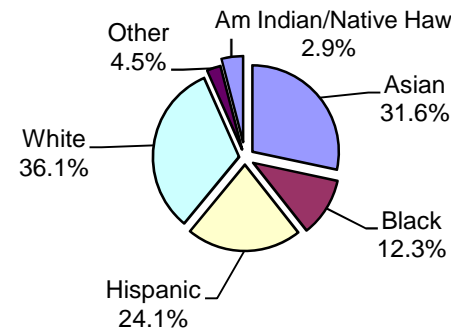
Admissions Average



Fall-to-Fall Retention Rate New Freshmen



Race/Ethnicity 2009 Freshmen*



* Total for race/ethnicity percentage exceeds 100% since there are 11.5% multiracial responses..

* Charts are based on the Fall 2009 regularly-admitted, degree-seeking Freshmen Cohort data, unless otherwise indicated.