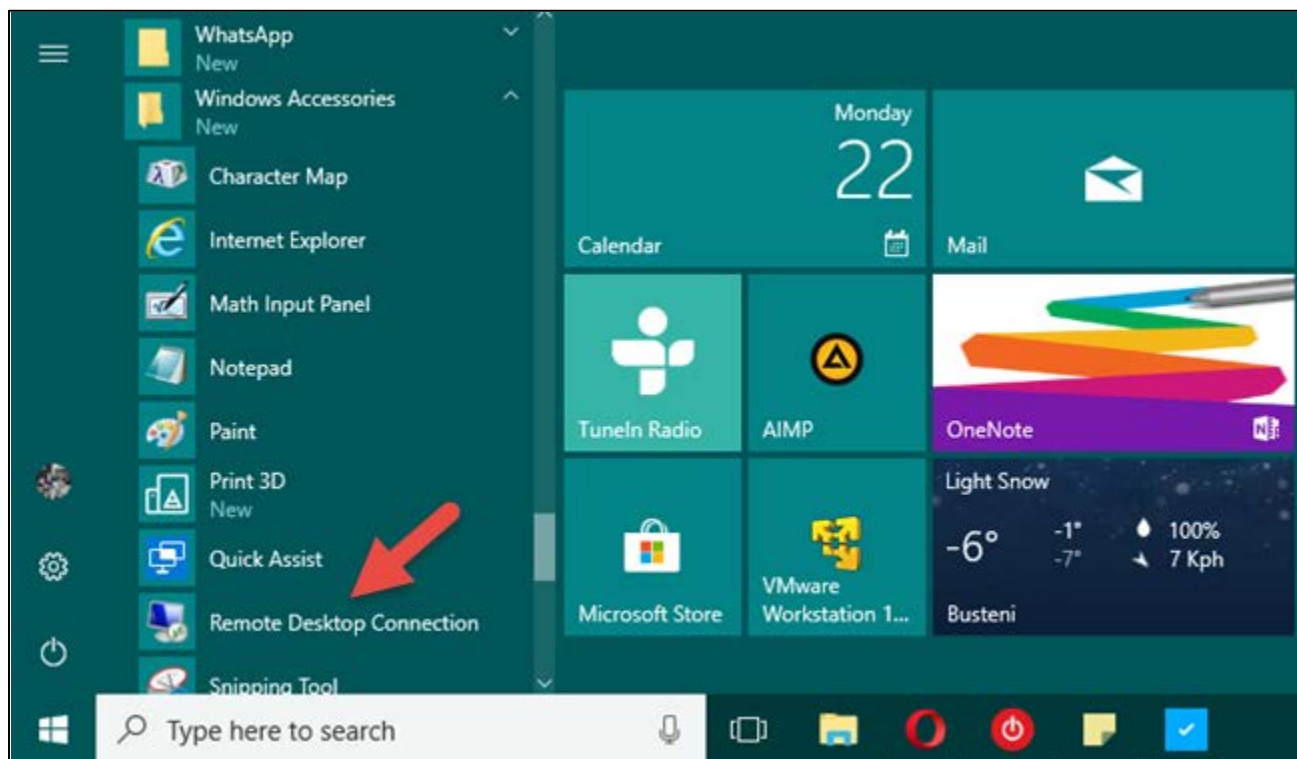
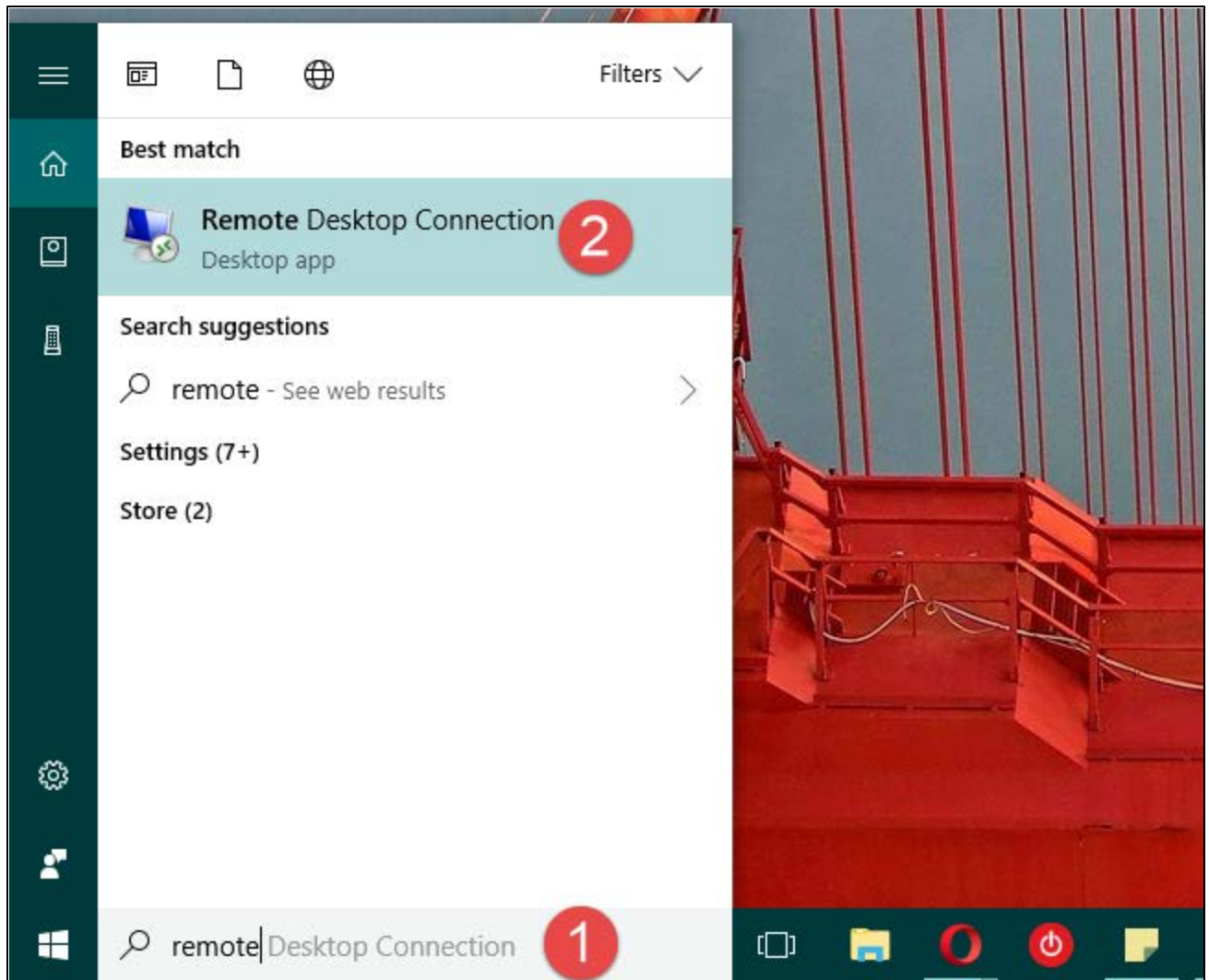


Windows Remote Desktop Connection

How to open Remote Desktop Connection (RDC) in Windows

- If you are using Windows 10, you can launch the **Remote Desktop Connection** client from the **Start Menu**.
- Open the **Start Menu** and scroll through the apps list until you find the folder **Windows Accessories**.
- Click or tap on the **Remote Desktop Connection** to open it.
- TIP: You can also use Cortana's search box from the taskbar. Type the word "remote" in the search field and click or tap on the appropriate result.

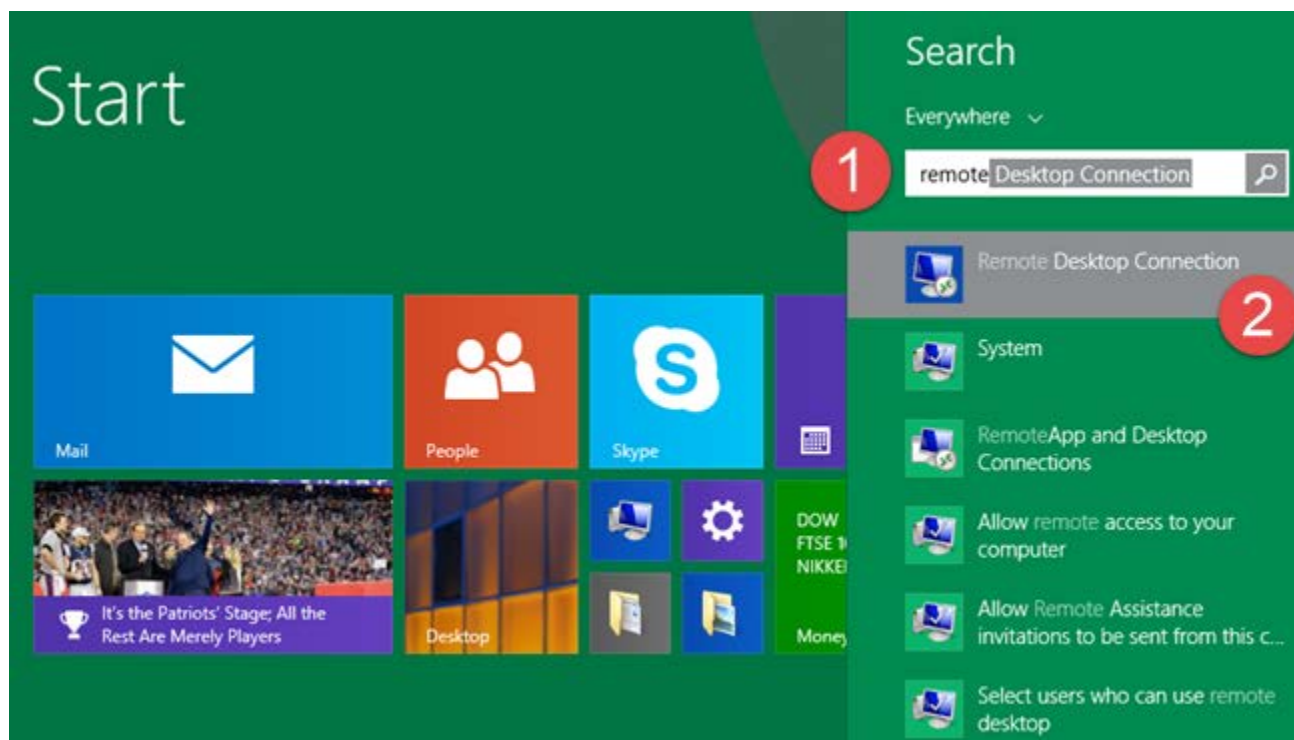




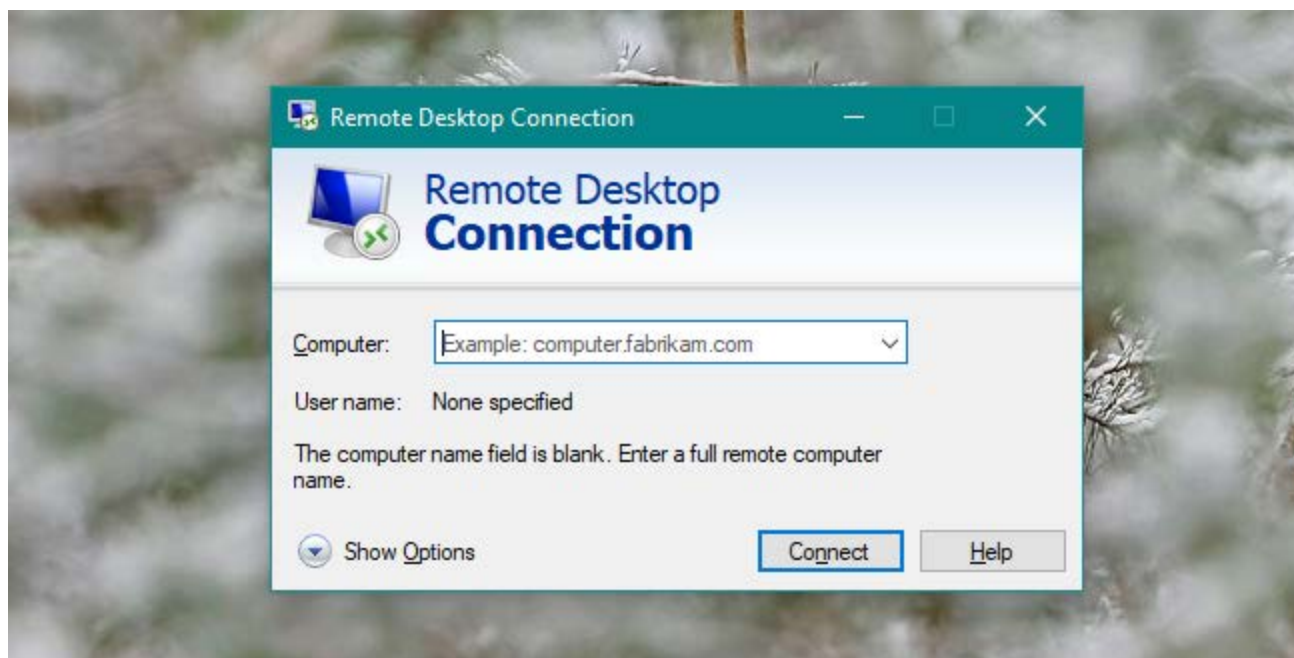
- TIP:: Alternatively, you can click or tap the microphone icon on the same search box and say: **"Open Remote Desktop Connection!"**.



How to use Remote Desktop Connection (RDC) in Windows



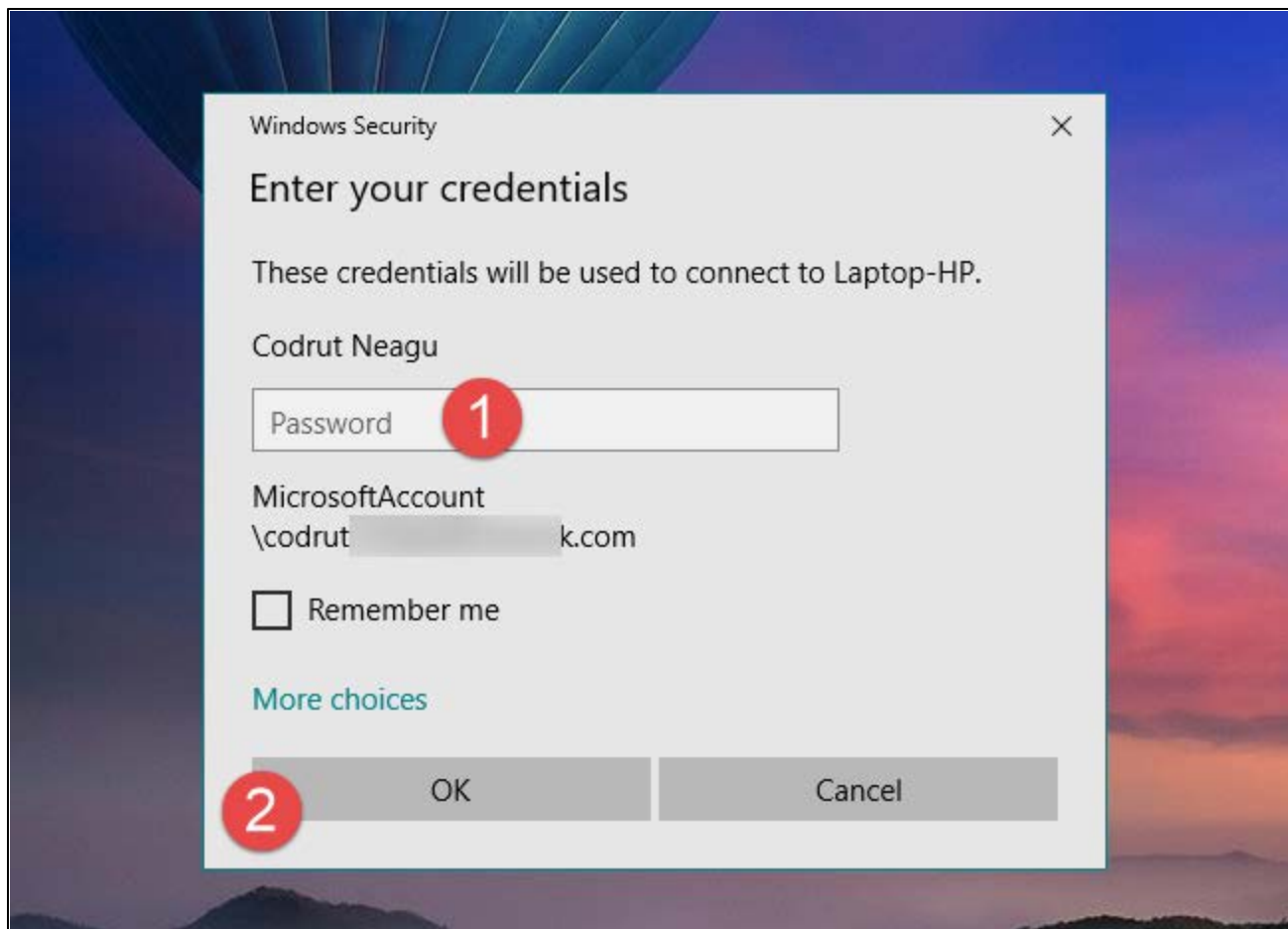
- No matter which way you choose to launch it, once the **Remote Desktop Connection** client is opened, it should look like the next screenshot.



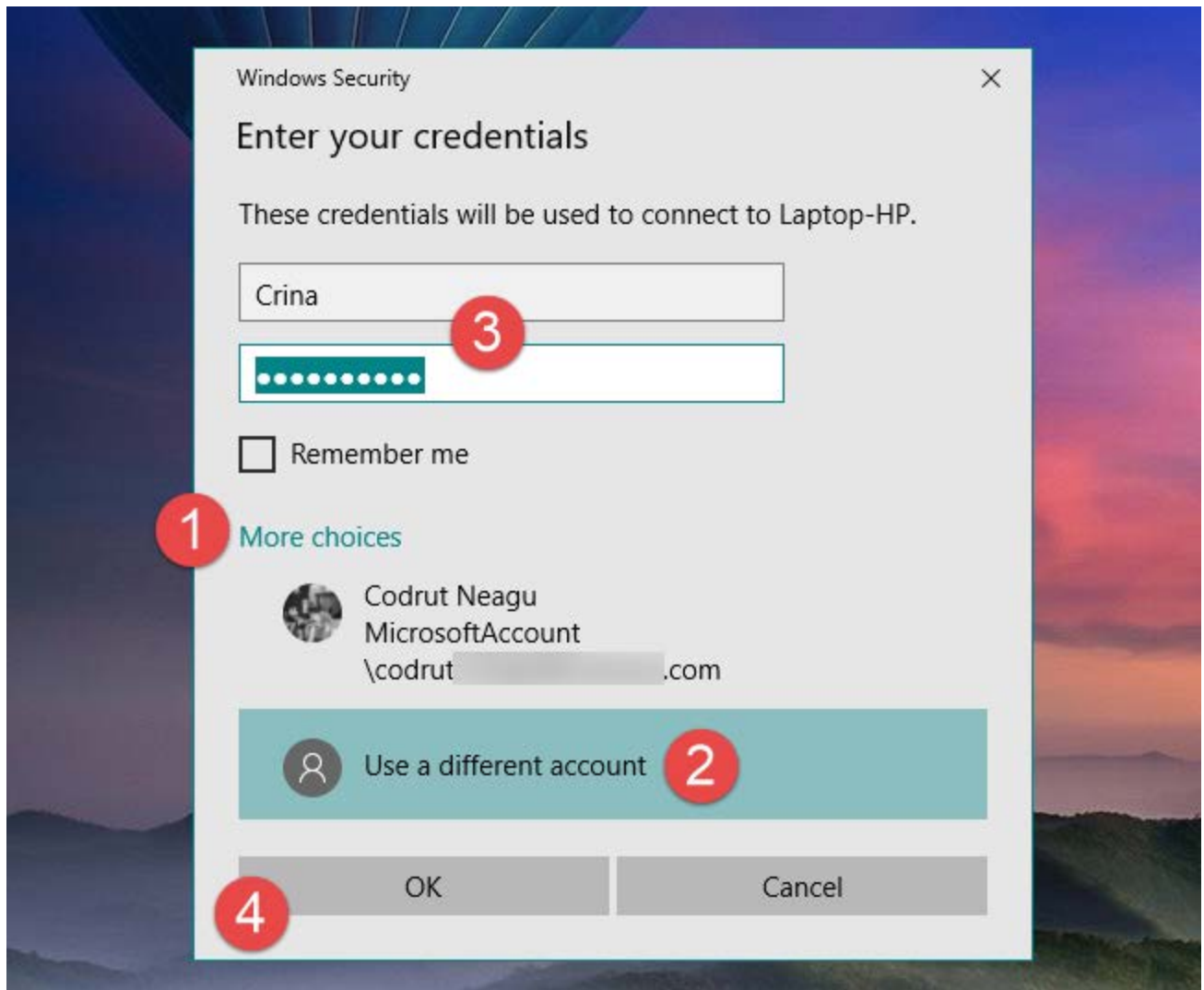
- Using the **Remote Desktop Connection** client is as fairly straightforward.
- First, type the full name of the computer to which you want to connect, and then click or tap on the **Connect** button.
- The computer name is host's *local IP address* which has been copied to your laptop's desktop for reference.



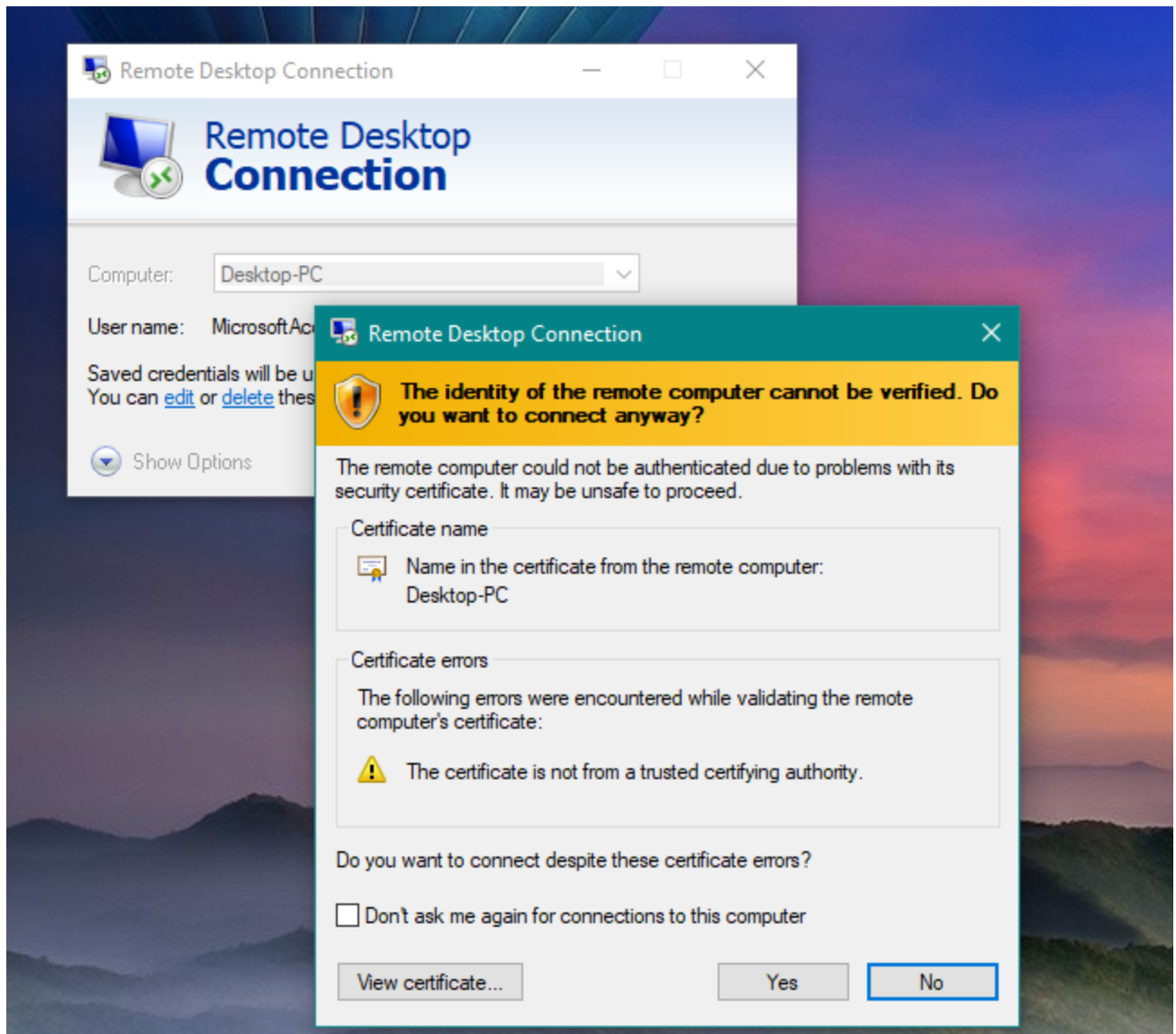
Then, the **Remote Desktop Connection** app asks for the user credentials that you need to use to sign in on to the remote Windows computer. If the user account selected by default, is the one you want to use, enter its password and press **OK**.



- If you want to sign in using another user account defined on the remote computer, click or tap on **More choices** and then enter the credentials of that user account.
- Your user account will be Your Hunter NetID and Hunter Password. Your username should follow the text "Hunter\
 - For example:
 - **Username:** *Hunter\username*
 - **Password:** *your password*



- After you click on **OK**, the *Remote Desktop Connection* app attempts to connect to the remote computer you specified.
- On occasion, for instance, when you use an [IP address](#) to connect, you might see a warning about the server name on the certificate not matching the computer name you entered. This may also happen if you did not use the same capitalization when entering the computer name. As long as the certificate name displayed is something you recognize, it is safe to click/tap **Yes** and continue.



After connecting, if everything works OK, after a couple of moments, you should see the remote machine in a window of its own. To give the remote machine keyboard and mouse focus, click or tap inside the window or make it full screen. To close the connection, simply close the window.