

MEMO

To: Distribution

Date: 6/21/06

From: Joan Lambe

Re: 2004 Survey of Earned Doctorates

The most recently released Survey of Earned Doctorates shows CUNY and SUNY colleges to be an important source of the nation's new PhDs. The survey, conducted by NORC and sponsored by six federal agencies, collected information about the baccalaureate institutions attended by approximately 42,000 new research doctorates. The 2004 doctoral recipients earned their undergraduate degrees at 1,272 foreign and domestic institutions.

- The University of California, Berkeley topped the list of baccalaureate-granting institutions, with 397 doctorates. It was followed by Tsinghua University, Seoul National University, Beijing University and the University of Michigan - Ann Arbor, each of which provided undergraduate training to at least 300 doctoral recipients. Hunter ranked 165 (49 PhDs), placing us among the top 15% of doctorate-producing institutions. (Table 1)
- Colleges in New York and California provided the undergraduate training for nearly 15% of research doctorates. Nearly one third of those who attended an undergraduate institution in New York state, earned their degree from a CUNY (9%) or SUNY (23%) college.
- Among New York state institutions, Hunter ranked 12th, followed by Brooklyn and Queens, as the baccalaureate-origin institution of the largest number of research doctorates. Locally, only Columbia and NYU ranked higher. (Table 2)
- Hunter has consistently been a feeder institution for the nation's PhD programs. Between 1995 and 2004, 500 research doctorates were awarded to Hunter undergraduates, placing us fifth among Master's level institutions¹ (2000 Carnegie classification) in preparing students for doctoral degrees. This is all the more impressive considering that California State – Long Beach, the top-ranked institution, graduated almost three times as many students. (Chart 1)
- During this same ten year period Hunter produced more doctoral recipients than any CUNY college. In recent years, however, Brooklyn and Queens College have narrowed this gap. (Chart 2)
- CUNY remains a critical source of minority doctorates – one out of four (26%) minority doctorates who earned an undergraduate degree in New York state attended a CUNY institution, compared to 7% of white doctoral recipients. Of the CUNY colleges, Brooklyn awarded undergraduate degrees to the largest number minority doctorates, while Hunter was the baccalaureate-origin institution of the largest number of women doctorates (tying us with Barnard). (Table 3)
- Hunter's programs in education and health sciences are well established. Among New York institutions, Hunter tied NYU for fifth place in training students who went on to earn a doctorate in education and equaled NYU and SUNY, Binghamton as a source of PhDs in the life sciences. (Table 2)

¹ Approximately 17% of research doctorates were awarded to graduates of Master's institutions. The largest percentage of doctoral recipients (40%) earned undergraduate degrees from institutions that also offered PhDs.

Table 1. Top Baccalaureate- Institutions of Doctorate Recipients, 2004

Baccalaureate-origin Institution ^a	Rank ^b	doctorates	^a	Rank ^b	doctorates
Univ of California-Berkeley	1	397	Univ of Connecticut	94	75
Tsinghua Univ	2	370	Univ of Central Florida	94	75
Seoul National Univ	3	352	SUNY at Albany	94	75
Beijing Univ	4	321	Rice Univ	94	75
Univ of Michigan-Ann Arbor	5	301	San Diego State Univ	97	74
Cornell Univ-Endowed Colls	6	293	Wellesley Coll	97	74
Harvard Univ	7	247	Rensselaer Polytechnic Instit	100	73
Univ of California-Los Angeles	8	242	SUNY at Binghamton	100	73
Univ of Illinois at Urbana-Champaign	9	240	Univ of Oregon	100	73
Brigham Young Univ	10	237	Univ of Toronto	102	72
Univ of Texas at Austin	11	228	Univ din Bucuresti	102	72
Pennsylvania State Univ-Main Campus	12	218	Auburn Univ Main Campus	104	71
Univ of Florida	13	214	Southern Illinois Univ-Carbon	104	71
Univ of Wisconsin-Madison	14	203	Miami Univ-Oxford	107	70
China Univ of Sci and Tech (Anhui U.)	15	191	Carnegie Mellon Univ	107	70
Univ of California-Davis	16	173	Univ of Pittsburgh-Main Camp	107	70
Yale Univ	17	172	James Madison Univ	107	70
Ohio State Univ-Main Campus	17	172	Ehwa Women's Univ	110	69
Univ of California-San Diego	19	170	Case Western Reserve Univ	112	68
Massachusetts Institute of Technology	20	169	Swarthmore Coll	112	68
Rutgers Univ-New Brunswick	21	163	Bogazici Univ	112	68
Princeton Univ	22	162	Grinnell Coll	116	67
National Taiwan Univ	23	161	Tufts Univ	116	67
Yonsei Univ	24	160	Univ of Oklahoma Norman C	116	67
Texas A&M Univ	25	157	Vanderbilt Univ	116	67
Stanford Univ	26	156	Baylor Univ	116	67
Univ of Washington-Seattle Campus	26	156	Texas Tech Univ	116	67
Michigan State Univ	28	155	Tulane Univ of Louisiana	120	66
Univ of Virginia-Main Campus	28	155	Univ of South Carolina-Colum	121	65
Univ of North Carolina at Chapel Hill	30	153	Univ of Houston-University P	122	64
Brown Univ	30	153	Univ of Delhi	122	64
Univ of Minnesota-Twin Cities	32	151	West Virginia Univ	124	63
Duke Univ	33	150	Ohio Univ-Main Campus	125	62
Univ of Arizona	34	146	California Institute of Technol	126	61
Univ of Maryland-College Park	35	141	California Polytechnic State U	126	61
Univ of Pennsylvania	36	135	Univ of Miami	128	60
Virginia Polytechnic Institute and State U	37	132	SUNY Coll at Geneseo	131	59
Univ of California-Santa Barbara	38	129	Vassar Coll	131	59
Univ of Chicago	39	127	Univ of Cincinnati-Main Camp	131	59
Univ of Colorado at Boulder	40	125	Oregon State Univ	131	59
Fudan Univ	41	124	Beijing Medical Univ	131	59
Purdue Univ-Main Campus	42	122	Univ of California-Riverside	135	57
Boston Univ	42	122	Smith Coll	135	57
Middle East Technical Univ	44	118	Univ of Vermont and State A	135	57
Florida State Univ	45	117	Loyola Univ Chicago	139	56
Indiana Univ-Bloomington	46	116	Kansas State Univ	139	56
Northwestern Univ	47	114	Boston Coll	139	56
Korea Univ	48	113	Temple Univ	139	56
Columbia Univ in the City of New York	49	112	Huazhong Univ of Sci & Tech	139	56
Iowa State Univ	50	111	IIT - Madras	139	56
Univ of California-Santa Cruz	51	110	San Francisco State Univ	145	55
Univ of Georgia	52	109	Northern Illinois Univ	145	55
Arizona State Univ-Main Campus	53	106	Wayne State Univ	145	55
Coll of William and Mary	54	103	Univ of New Hampshire-Main	145	55
Chulalongkorn Univ	54	103	Oklahoma State Univ-Main C	145	55
Univ of Massachusetts-Amherst	56	102	King Saud Univ	145	55
Nankai Univ	56	102	Univ of Illinois at Chicago	149	54
Univ of Nebraska at Lincoln	58	99	SUNY at Stony Brook	149	54
Univ of Utah	59	97	Amherst Coll	152	53
Univ of Mumbai	60	96	St. Olaf Coll	152	53
Wesleyan Univ	62	95	Univ of Southern Mississippi	152	53
Univ of Kansas Main Campus	62	95	Reed Coll	152	53
New York Univ	62	95	Bowling Green State Univ-Ma	155	52
Univ of Delaware	64	93	Utah State Univ	155	52
Univ of Rochester	65	92	California State Univ-Fullerton	159	51
Univ of South Florida	66	91	George Washington Univ	159	51
Univ of Iowa	66	91	Clemson Univ	159	51
Univ of Notre Dame	69	90	Tianjin Univ	159	51
North Carolina State Univ at Raleigh	69	90	Xian Jiaotong Univ	159	51
Zhejiang Univ	69	90	California State Univ-Northrid	162	50
Univ of Tennessee	72	89	Moscow State Univ	162	50
Nanjing Univ	72	89	Western Michigan Univ	165	49
Wuhan Univ	72	89	CUNY Hunter Coll	165	49
Univ of Missouri-Columbia	74	88	Univ Nacional Autónoma de M	165	49
Dartmouth Coll	74	88	Williams Coll	167	48
Colorado State Univ	76	87	Univ of Jordan	167	48
Oberlin Coll	77	86	Univ of Hawaii at Manoa	170	47
Georgetown Univ	79	85	Brandeis Univ	170	47
Washington Univ in St. Louis	79	85	Kasetsart Univ	170	47
Univ of New Mexico-Main Campus	79	85	California State Univ-Long Be	173	46
Carleton Coll	81	84	Univ of Puerto Rico-Rio Piedr	173	46
McGill Univ	81	84	Univ of Madras	173	46
Georgia Institute of Technology-Main Ca	83	83	Univ of Belgrade	173	46
Hanyang Univ	83	83	Univ of Alabama	179	45
Emory Univ	85	82	CUNY Queens Coll	179	45
Univ of California-Irvine	86	81	Wake Forest Univ	179	45
Univ of Kentucky	86	81	Trinity Univ	179	45
Johns Hopkins Univ	89	79	Univ of North Texas	179	45
SUNY at Buffalo	89	79	Univ of British Columbia	179	45
Shanghai Jiaotong Univ	89	79	Sichuan Univ	179	45
Louisiana State Univ & Ag & Mech & Hel	91	78			
Univ of Southern California	92	77			

^a Only institutions with 45+ doctorate recipients are listed.

^b Rank based on total doctorates among U.S. & non-U.S. baccalaureate institutions.

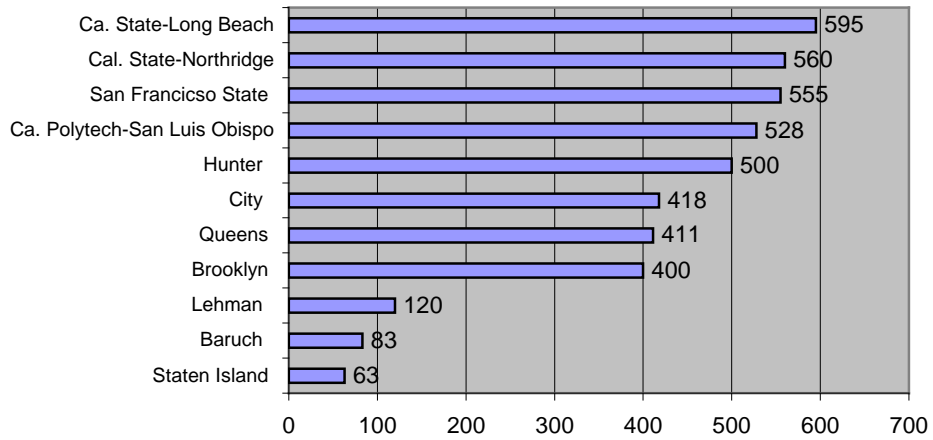
Table 2. Broad field of doctorate study of doctorate recipients, by baccalaureate-origin institution, 2004

Baccalaureate-origin Institution ^a	Rank ^b	All research doctorates							Professional/other fields
		Physical sciences	Engineering	Life sciences	Social sciences	Humanities	Education		
NEW YORK	----	2,200	256	168	469	463	393	328	123
Cornell Univ-Endowed Colls	6	293	34	40	111	54	27	16	11
Columbia Univ in the City of New York	49	112	14	6	18	28	37	7	2
New York Univ	62	95	6	0	11	34	25	11	8
Univ of Rochester	65	92	12	7	18	15	30	8	2
SUNY at Buffalo	89	79	15	12	10	17	8	12	5
SUNY at Albany	94	75	8	3	8	22	11	14	9
Rensselaer Polytechnic Institute	100	73	21	29	18	1	0	2	2
SUNY at Binghamton	100	73	6	5	11	27	13	8	3
SUNY Coll at Geneseo	131	59	12	3	13	15	8	7	1
Vassar Coll	131	59	3	0	10	20	19	7	0
SUNY at Stony Brook	149	54	9	3	17	7	7	8	3
CUNY Hunter Coll	165	49	1	0	11	14	8	11	4
CUNY Queens Coll	179	45	7	0	6	11	11	7	3
CUNY Brooklyn Coll	186	44	5	1	4	8	10	14	2
Colgate Univ	194	42	8	2	12	9	7	4	0
United States Military Academy	197	41	8	8	4	6	5	5	5
Fordham Univ	221	38	5	1	5	5	9	8	5
Barnard Coll	236	36	1	0	3	21	9	1	1
Syracuse Univ	236	36	1	3	10	10	4	6	2
CUNY City Coll	271	33	2	2	7	7	4	7	4
Rochester Institute of Technology	271	33	8	5	12	1	2	3	2
Hamilton Coll	375	24	4	0	3	5	10	1	1
Hofstra Univ	375	24	1	0	3	3	5	8	4
Canisius Coll	405	22	2	0	3	4	8	4	1
Ithaca Coll	405	22	1	1	5	8	3	4	0
SUNY Coll at Fredonia	405	22	2	1	4	2	5	7	1
Skidmore Coll	421	21	2	0	6	3	6	3	1
SUNY Coll at Buffalo	440	20	1	0	2	3	3	9	2
Hobart William Smith Colls	466	19	2	0	3	5	2	4	3
SUNY Coll at Plattsburgh	466	19	1	1	10	2	1	4	0
St. Lawrence Univ	491	18	3	0	5	6	2	2	0
SUNY Coll at Oswego	514	17	5	0	3	4	2	3	0
SUNY-Potsdam	538	16	3	1	2	0	5	5	0
Adelphi Univ	572	15	0	0	3	3	2	5	2
CUNY Lehman Coll	572	15	1	0	1	4	3	5	1
Sarah Lawrence Coll	572	15	0	0	0	1	13	0	1
SUNY Coll at New Paltz	572	15	2	0	3	3	3	3	1
SUNY Coll of Environmental Science and Fc	613	14	1	1	8	1	0	2	1
Bard Coll	648	13	0	0	3	4	6	0	0
Clarkson Univ	648	13	3	5	3	0	0	1	1
Siena Coll	648	13	2	0	5	4	2	0	0
Yeshiva Univ	648	13	2	1	3	2	3	1	1
Excelsior Coll	686	12	2	0	1	3	1	4	1
SUNY Coll at Brockport	686	12	1	1	0	2	3	5	0
SUNY Coll at Cortland	686	12	1	0	5	2	0	3	1
SUNY Coll at Purchase	686	12	1	0	1	4	6	0	0
Union Coll	686	12	5	2	0	1	2	2	0
Le Moyne Coll	725	11	0	1	6	3	1	0	0
St. John's Univ-New York	725	11	1	0	1	7	1	1	0
Houghton Coll	772	10	0	0	2	4	1	2	1
Juilliard School	772	10	0	0	0	0	8	2	0
Alfred Univ	840	9	1	6	1	1	0	0	0
Manhattan Coll	840	9	0	2	2	4	0	1	0
Niagara Univ	840	9	1	0	5	1	0	2	0
Sage Colls-Troy Campus	840	9	0	0	5	0	0	1	3
St. Bonaventure Univ	840	9	1	0	1	0	1	4	2
Polytechnic Univ	916	8	2	5	1	0	0	0	0
St. John Fisher Coll	916	8	1	1	0	3	1	2	0
SUNY Coll at Oneonta	916	8	0	1	0	2	0	4	1
Cooper Union for the Advancement of Scien	1,003	7	1	2	1	1	0	1	1
Marist Coll	1,003	7	1	0	1	1	0	3	1
Pace Univ-New York	1,003	7	0	0	0	1	2	3	1
Southampton Coll of Long Island Univ	1,003	7	1	0	3	1	0	2	0
Coll of St. Rose	1,102	6	0	0	2	0	0	3	1
Cornell Univ-NY State Statutory Colls	1,102	6	0	0	2	1	3	0	0
CUNY Bernard M Baruch Coll	1,102	6	0	0	0	2	0	2	2
Iona Coll	1,102	6	1	0	1	1	0	1	2
Nazareth Coll of Rochester	1,102	6	0	0	1	0	1	4	0
Pace Univ-Pleasantville Briarcliff	1,102	6	1	0	2	1	0	2	0
CUNY York Coll	1,212	5	0	0	3	0	0	1	1
Kings Coll	1,212	5	1	1	0	0	0	3	0
Wagner Coll	1,212	5	1	0	1	1	0	1	1

^a Only institutions with five or more doctorate recipients are listed.

^b Rank is based on total number of doctorate recipients among both U.S. and non-U.S. baccalaureate-origin institutions.

**Chart 1:
Research Doctorates By Baccalaureate-Origin Master's Institution
1995-2004**



**Chart 2:
Research Doctorates Awarded to Graduates of CUNY Senior Colleges, By Year**

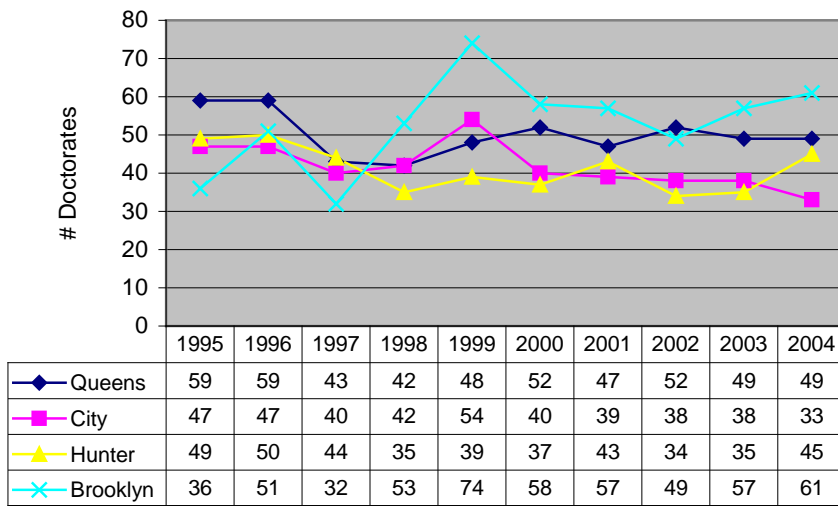


Table 3. Sex, and race/ethnicity of doctorate recipients, by baccalaureate-origin institution, 2004

Baccalaureate-origin Institution ^a	Rank ^b	All doctorates					Black/ Afr/Amer	Hispanic	White	Other/ unkn
		^c	Male	Female	Asian					
NEW YORK	----	2,200	1,083	1,116	129	161	86	1,656	68	
Adelphi Univ	572	15	6	9	0	3	0	11	0	
Alfred Univ	840	9	6	3	0	0	0	8	1	
Bard Coll	648	13	5	8	0	1	0	11	0	
Barnard Coll	236	36	0	36	4	5	2	22	2	
Canisius Coll	405	22	6	16	0	2	0	19	0	
Clarkson Univ	648	13	13	0	0	0	0	12	1	
Colgate Univ	194	42	24	18	0	0	1	37	1	
Coll of St. Rose	1,102	6	2	4	0	0	0	5	0	
Columbia Univ in the City of New York	49	112	61	51	14	9	7	73	5	
Cooper Union for the Advancement of Science & Art	1,003	7	5	2	1	1	0	3	1	
Cornell Univ-Endowed Colls	6	293	162	130	29	7	11	213	14	
Cornell Univ-NY State Statutory Colls	1,102	6	2	4	0	0	0	5	1	
CUNY Bernard M Baruch Coll	1,102	6	2	4	1	1	1	3	0	
CUNY Brooklyn Coll	186	44	16	28	0	13	2	25	1	
CUNY City Coll	271	33	17	16	4	7	7	13	1	
CUNY Hunter Coll	165	49	12	37	1	9	4	32	1	
CUNY Lehman Coll	572	15	6	9	0	6	4	5	0	
CUNY Queens Coll	179	45	22	23	3	3	6	30	0	
CUNY York Coll	1,212	5	1	4	1	2	0	2	0	
Excelsior Coll	686	12	9	3	1	1	0	10	0	
Fordham Univ	221	38	15	23	0	3	3	30	1	
Hamilton Coll	375	24	9	15	1	2	0	18	0	
Hobart William Smith Colls	466	19	9	10	0	2	0	17	0	
Hofstra Univ	375	24	9	15	0	4	1	18	1	
Houghton Coll	772	10	3	7	0	0	0	9	1	
Iona Coll	1,102	6	4	2	0	2	0	3	1	
Ithaca Coll	405	22	12	10	0	1	0	19	1	
Juilliard School	772	10	3	7	5	0	0	2	1	
Kings Coll	1,212	5	3	2	0	0	0	5	0	
Le Moyne Coll	725	11	4	7	0	0	0	10	0	
Manhattan Coll	840	9	6	3	0	0	0	8	1	
Marist Coll	1,003	7	2	5	0	0	0	7	0	
Nazareth Coll of Rochester	1,102	6	1	5	0	1	0	5	0	
New York Univ	62	95	38	57	11	8	5	67	2	
Niagara Univ	840	9	3	6	0	0	1	8	0	
Pace Univ-New York	1,003	7	2	5	0	0	1	6	0	
Pace Univ-Pleasantville Briarcliff	1,102	6	5	1	0	0	1	5	0	
Polytechnic Univ	916	8	6	2	2	0	1	4	0	
Rensselaer Polytechnic Institute	100	73	54	19	10	2	0	55	1	
Rochester Institute of Technology	271	33	23	10	0	3	1	24	4	
Sage Colls-Troy Campus	840	9	1	8	0	0	0	9	0	
Sarah Lawrence Coll	572	15	4	11	0	0	0	13	1	
Siena Coll	648	13	6	7	0	0	0	12	0	
Skidmore Coll	421	21	4	17	2	1	1	16	1	
Southampton Coll of Long Island Univ	1,003	7	3	4	0	0	0	6	0	
St. Bonaventure Univ	840	9	5	4	0	0	0	9	0	
St. John Fisher Coll	916	8	7	1	0	0	1	5	1	
St. John's Univ-New York	725	11	4	7	0	2	1	7	0	
St. Lawrence Univ	491	18	13	5	0	1	0	16	0	
SUNY at Albany	94	75	44	31	3	7	0	60	2	
SUNY at Binghamton	100	73	32	41	4	3	4	56	2	
SUNY at Buffalo	89	79	38	41	3	6	1	62	2	
SUNY at Stony Brook	149	54	37	17	4	6	1	38	2	
SUNY Coll at Brockport	686	12	5	7	0	2	0	10	0	
SUNY Coll at Buffalo	440	20	10	10	0	6	1	13	0	
SUNY Coll at Cortland	686	12	9	3	0	0	0	11	1	
SUNY Coll at Fredonia	405	22	14	8	1	0	0	20	1	
SUNY Coll at Geneseo	131	59	26	33	2	0	2	54	0	
SUNY Coll at New Paltz	572	15	8	7	0	2	0	13	0	
SUNY Coll at Oneonta	916	8	3	5	1	2	0	5	0	
SUNY Coll at Oswego	514	17	7	10	1	0	0	15	1	
SUNY Coll at Plattsburgh	466	19	11	8	0	0	0	19	0	
SUNY Coll at Purchase	686	12	3	9	1	1	1	8	1	
SUNY Coll of Environmental Science and Forestry	613	14	11	3	0	0	0	14	0	
SUNY-Potsdam	538	16	7	9	0	1	1	13	0	
Syracuse Univ	236	36	15	21	0	5	1	28	1	
Union Coll	686	12	9	3	0	0	0	11	1	
United States Military Academy	197	41	37	4	0	2	0	35	3	
Univ of Rochester	65	92	44	48	13	2	2	66	2	
Vassar Coll	131	59	12	47	4	3	1	49	1	
Wagner Coll	1,212	5	1	4	0	0	1	4	0	
Yeshiva Univ	648	13	9	4	0	0	0	12	0	
NEW YORK		2,200	1,083	1,116	129	161	86	1,656	68	
All CUNY Institutions		197	76	121	10	41	24	110	3	
- As a Percentage of All NY Institutions		9.0	7.0	10.8	7.8	25.5	27.9	6.6	4.4	

^a Only institutions with five or more doctorate recipients are listed.

^b Rank is based on total number of doctorate recipients among both U.S. and non-U.S. baccalaureate-origin institutions.

^c Includes doctorate recipients who did not provide their sex and/or citizenship status.